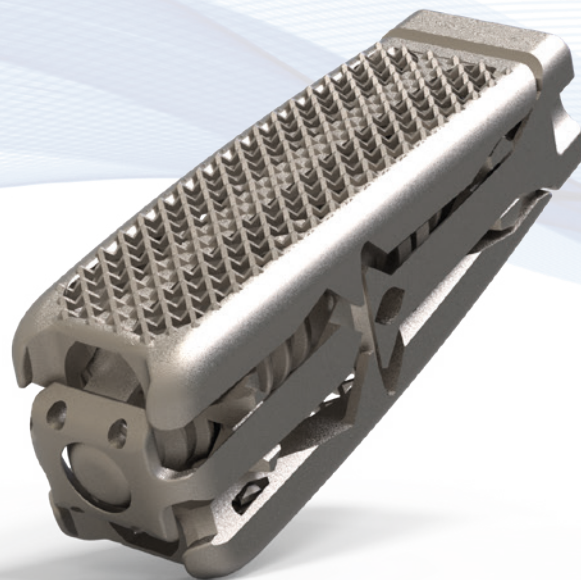


Interbody Fusion Cages

# PROCIDA

PLIF 3D Printed Titanium Cage

*Expandable*



## Excellent Stability



Additive manufacturing technology in combination with a unique geometrical implant design facilitates efficient and reliable primary and secondary fixation.

The unique "net" structure provides strong primary fixation and eliminates the risk of implant migration.

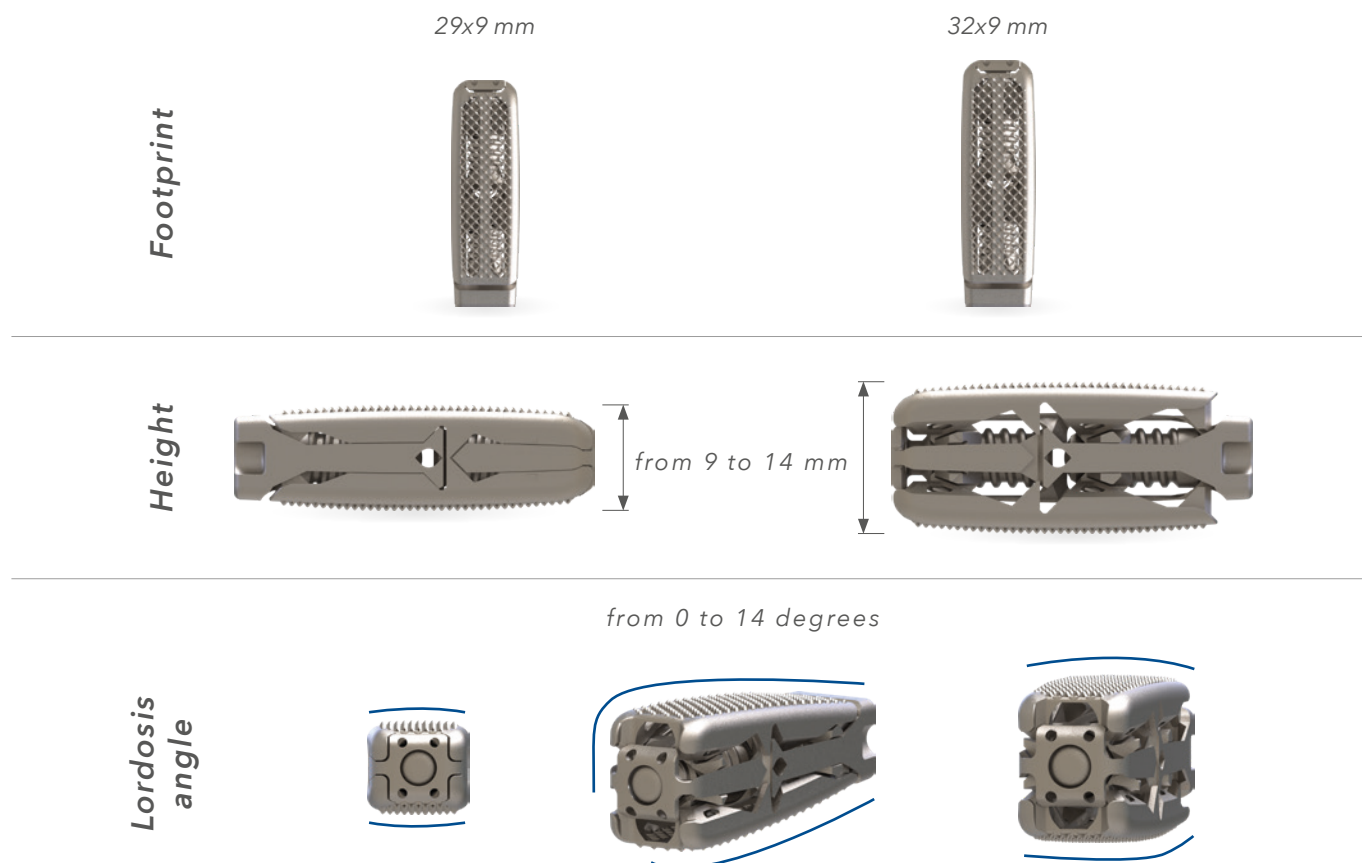
The elasticity modulus of the implant is similar to PEEK alternatives and close to natural bone characteristics, which is the key success factor of bone in-growth. Secondary fixation is supported by fast and effective osteointegration.

## Wide Variety of Dimensions

The design concept of Procida, 3D printed PLIF cage, is made to meet well experienced surgeons' requirements.

Tsunami Medical offers implants in a wide range of footprints, heights, and lordosis angles, offering just one system matching patients' natural anatomy and surgeons' preferences.

For Procida, Tsunami Medical offers two footprints and a range of six possible heights, with possible lordosis angles ranging from 0° to 14°.



# Bone InGrowth Technology®

Procida, 3D printed PLIF cage, has a unique net structure and a semi-open internal design, which allows a large volume of new bone colonisation.

Both the pore size of the net structure and the surface roughness of the implant edges meet with the ideal dimensions to facilitate fast and effective osteointegration, as described in scientific publications.

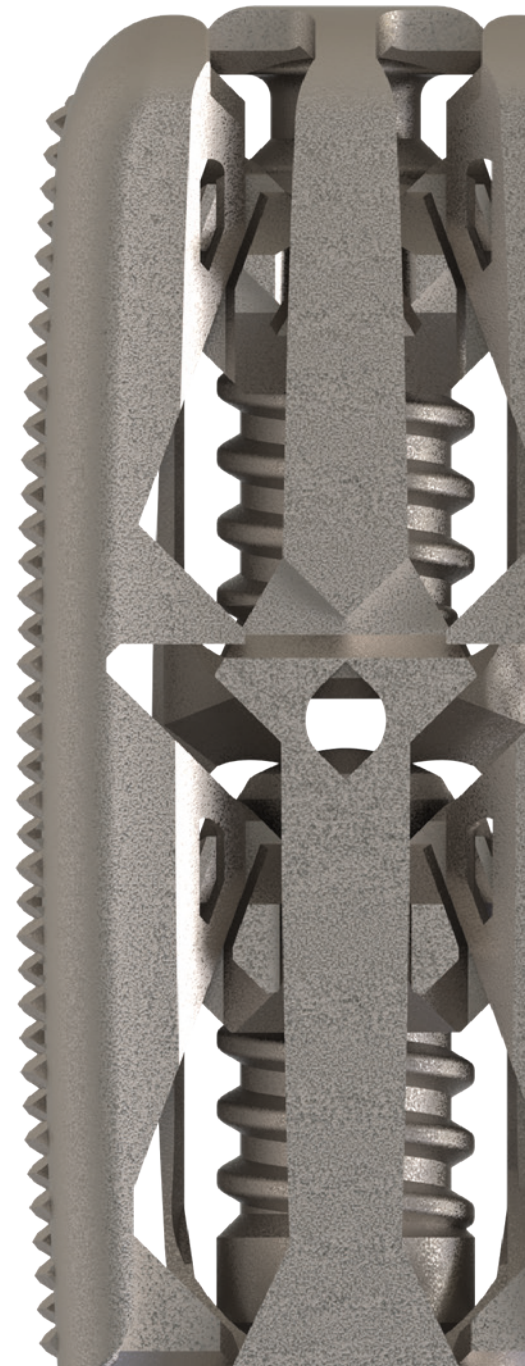
Elasticity of the 3D printed titanium geometry facilitates fast new bone formation and offers an excellent platform for Bone InGrowth.

When surgeons deem necessary to add an additional bone growth accelerator, Tsunami Medical's Universal Filling System supports the bone substitute filling procedure, either at pre-implantation or post-implantation stage of the surgical procedure, in an effective way.

## Additional Expansion Feature

Procida has a unique multi-direction extension mechanism: it allows cranial-caudal height extension and amendment to the required lordosis angle by individual and gradual extension in anterior and posterior direction. With this unique feature surgeons are able to make the implant perfectly fit the natural anatomy or achieve the required restoration of balance at one or more affected levels.

Both implantation and the individual expansion features are being performed with one and the same implant introducer; no additional instruments are required. Apart from ease of use for the surgeon and time saving, patient's safety and comfort are being secured because of this.



# Product Reference Codes

Ref. Code	Dimensions
ACPH29090900	Footprint Size <b>29x9mm</b> - Angles <b>0°-14°</b> Heights [mm] <b>09-14</b>
ACPH32090900	Footprint Size <b>32x9mm</b> - Angles <b>0°-14°</b> Heights [mm] <b>09-14</b>



Made in Italy

**Tsunami Medical S.r.l.**

Reg. Offices: via E. Giorgi n. 27 - 41124 Modena (MO) Italy  
Production & Administrative Site: Via XXV Aprile n. 22 - 41037 Mirandola (MO) Italy  
Tel. +39.0535.38397 - Fax. +39.0535.38399  
[www.tsunamimedical.com](http://www.tsunamimedical.com) - [info@tsunamimed.com](mailto:info@tsunamimed.com)

BR\_PROCIDA\_REV7\_20250319